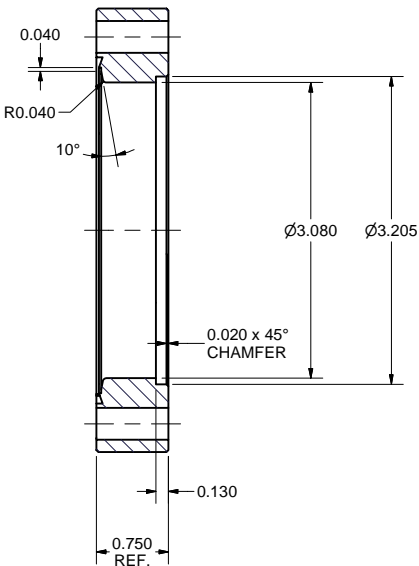
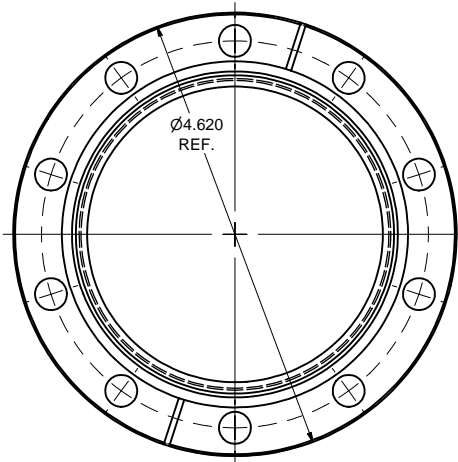
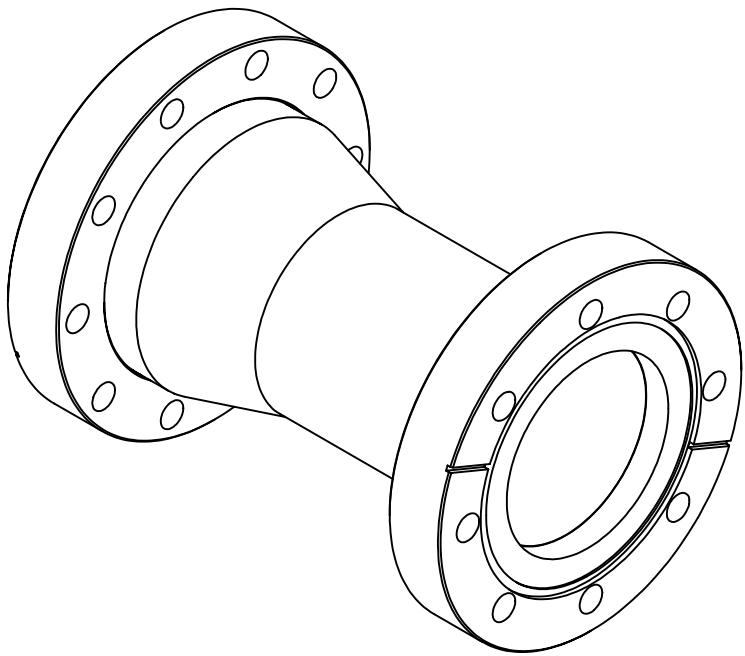
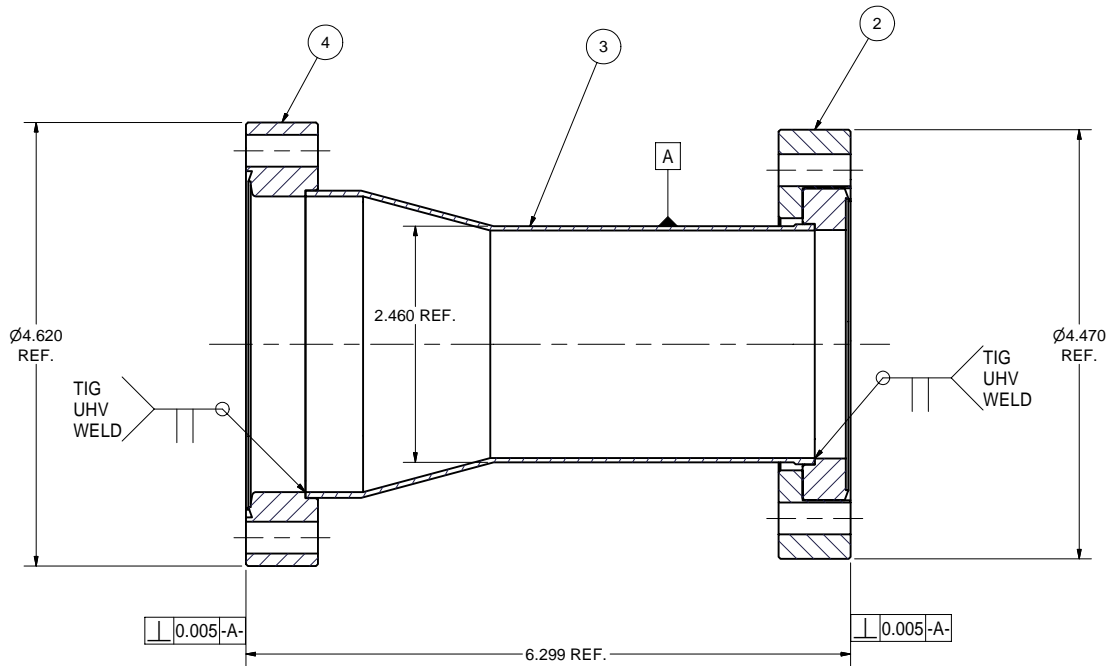
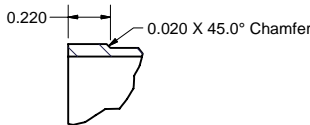


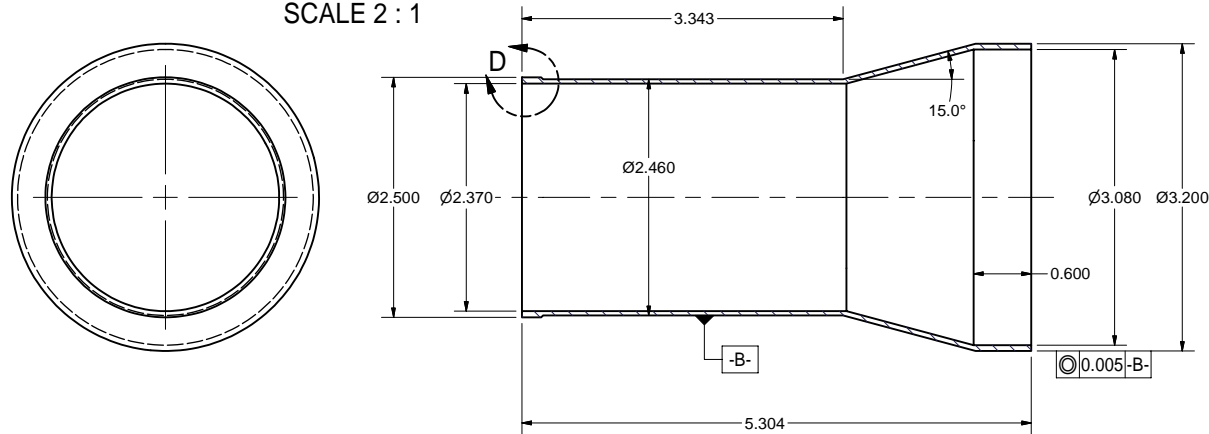
REVISIONS				
SYM.	ZONE	DESCRIPTION	DATE	APP.



1 HOM-78 TO GATE VALVE SPOOL PIECE SUBASM
FILE NAME: 7102-045
SHEET NO.: 1
DFT. SCALE: 1:1
MATERIAL: NOTED
QTY: 1 PER ASSEMBLY
NOTES:



DETAIL D
SCALE 2 : 1



3 TRANSITION TUBE 1
FILE NAME: 7102-045
SHEET NO.: 1
DFT. SCALE: 1:1
MATERIAL: 316L SST
QTY: 1 PER SUBASM
NOTES:

4 4-5/8" CF NON-ROTATABLE 3.0" TUBE FLANGE MODIFICATION
FILE NAME: 7102-045
SHEET NO.: 1
DFT. SCALE: 1:1
MATERIAL: 316L SST
QTY: 1 PER SUBASM
NOTES: 1. MAKE FROM Varian's F0462-0300-NC6, OR EQUIV.

FOR MACHINING LUBRICANT USE ONLY
ALKALINE DETERGENT LUBRICANT CIMSTAR 40
OR EQUIVALENT APPROVED BY CORNELL LEPP

TECHNICAL RESOURCE APPROVALS REQUIRED BEFORE FABRICATION			
	OK	DATE	N/A
DRAFTING (O'Connell):			
MACHINE SHOP (Kaminski):			
CHEMISTRY (Conklin):			
ELECTRONICS SHOP (Barley):			
FURNACE BRAZING (Sherwood):			
BEAM WELDING (Sears):			
WELDING OTHER (Gallagher):			
UTILITIES INTEGRATION (Gallagher):			
STOCKROOMS (Lockwood):			

ITEM	DWG. NO.	DESCRIPTION	G1	G2	G3	REMARKS	REV.
4	7102-045 (Sh.1)	4-5/8" CF Non-Rotatable 3.0" Tube Flange Modification	1				
3	7102-045 (Sh.1)	TRANSITION TUBE 1	1				
2		4-1/2" CF Rotatable 2.5" Tube Flange, 316L St.St.	1			Varian's F0450-0250-RC6, or Equiv.	
1	7102-045 (Sh.1)	HOM-78 TO GATE VALVE SPOOL PIECE SUBASM	X				
PLOT DATE: 1/8/2007 CAD FILE NAME: 7102-045.idw							
UNLESS OTHERWISE SPECIFIED: DIMENSIONS ARE IN INCHES: TOLERANCES ON: .00 ± .010 .000 ± .005 FRACTIONS ± 1/64 ANGLES ± 0.5° ALL SURFACES							
CORNELL UNIVERSITY FLOYD R. NEWMAN LABORATORY ITHACA, NY 14853							
ERL INJECTOR CRYOMODULE HOM-78 TO GATE VALVE SPOOL PIECE SUBASM							
CHECKED BY: VM APPROVED BY: VM			DRAWN BY: toc	DRAWN FOR: VM	DATE: 1/3/2007	SCALE: D	7102-045 SH. NO. 1 OF 1